

Laryngeal Electrode Intubation Instructions

Reliable performance of LSE500 electrodes requires proper positioning. Please follow these instructions carefully and avoid using long-acting paralytics.

1. Choose any non-silicon ET tube and the appropriate electrode based on the ET size chart below:

Electrode	LSE500M	LSE500Ms	LSE500Msp
ET Tube	10.0 - 7.5	7.0 - 6.0	5.5 - 2.0

2. Turn over and straighten the ET tube to expose what will be the posterior side when intubated. Use of a straightened stylet facilitates hands-free straightening of the ET tube.
3. Remove the paper backing from the electrode and apply at least 1 inch above the balloon and with the wires directed toward the mouth. (fig.1)
4. Align electrode's midline with the midline of the posterior portion of the tube. Press electrode down, wrapping it toward the top (anterior) side of the ET tube. (fig.2) Avoid rubbing the plates as this may damage the electrode surface.
5. A small amount of lubricant may be applied to the electrode. Insert the ET tube under direct vision so that each vocal cord is touching its respective electrode plate and rests between the two blue positioning stripes. (fig.3)
6. Note the depth number on the ET tube against the maxillary central incisors before any further positioning of the patient.
7. After final positioning of patient, align ET tube in the middle of the pharynx behind the tongue. The posterior portion of the ET tube should be directly opposite the central maxillary incisor gap at the depth number noted after initial positioning.
8. Tape the ET tube securely with 2 pieces of tape by wrapping each piece first around the tube and then securing to the upper lip. (fig.4)
9. Tightly secure the breathing circuits so the ET tube will not rotate or be displaced and then verify final electrode position by laryngoscopy with a #3 Miller Blade.
10. Attach red and blue electrode lead wires to the + and - EMG terminals and apply an EMG ground.



Figure 1

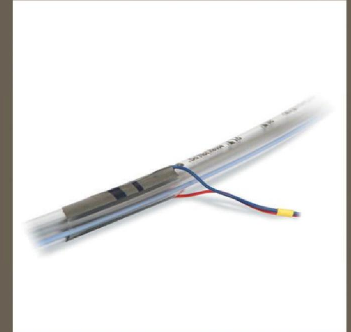


Figure 2

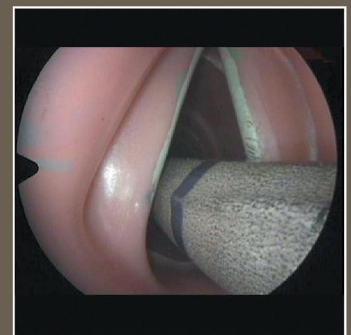


Figure 3



Figure 4

Neurovision Medical Products warrants its electrodes and limits its liability only to replacement for defect in materials or workmanship. To be used only by a licensed practitioner. Neurovision products are latex free.

neurovision
MEDICAL
Innovative Surgical Products Since 1973
Ventura, California U.S.A. 93003
tel: (866) 815-6999
fax: (877) 330-1727
www.neurovisionmedical.com